



PS-55AT

User Manual

Note

- Please read this operation manual before using the power supply for correct and safe use
- The power supply shall be used with correct input of voltage
- The power supply shall be used in a place of good ventilation
- Please put the power supply in a clean and dry place, which is far away from oil, gas, noise and high voltage site
- Please make sure the power supply is grounded in use
- Please return to ASG for any repairs
- The power supply shall be put at a place where it is clearly seen, easy to move and convenient for maintenance

Product Specifications

ASG Number	65707
Model Number	PS-55AT
Size	7 x 3.5 x 3.3 in. (180 x 90 x 85 mm)
Weight	6 lb. (2700 g)
Input Voltage	AC 110V or 230V 50/60Hz
AC Plug Cord Length	6 ft. (1.8 m)
Output Voltage	DC 30/20V HI/LOW Max 2.5A

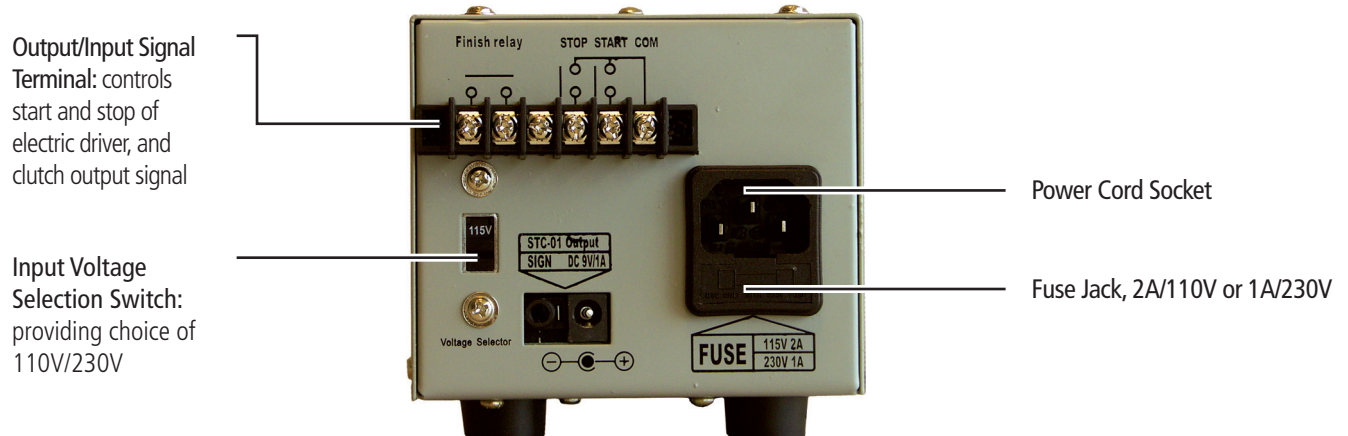
Front Panel



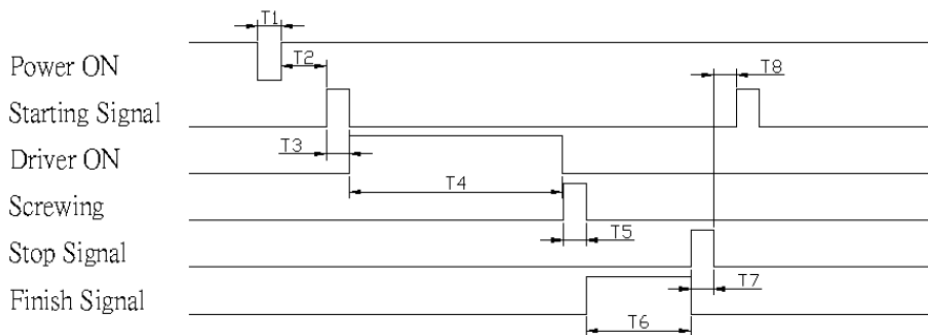
ASG, Division of Jergens, Inc.

15700 S. Waterloo Road | Cleveland, OH 44110-3898
Phone: (888) 486-6163 | Fax: (216) 481-4519
Email: asginfo@asg-jergens.com | Web: www.asg-jergens.com

Backboard

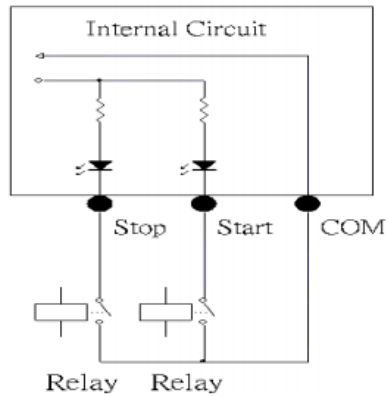


Power Supply Signal Time Scale

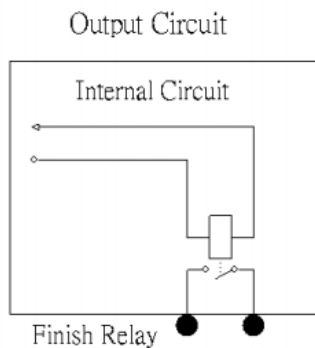


T1	Turn on the power and start the power supply at least 2 seconds after the power is off (Robotic Operation)
T2	Input the signal to start the electric driver at least 2 seconds after the power supply is started (Robotic Operation)
T3	Indicating the start signal of the electric driver, which shall exceed 0.5 second
T4	Indicating the run time of the electric driver, which varies with the locking time
T5	The clutch signal of the electric driver
T6	Signal output by the backboard (Finish) of the power supply when the clutch operates, lasting for a period from the time when the clutch activates until the input of Stop signal
T7	Indicating the stop signal (required to be longer than 0.5 second), which is explained as follows: <ul style="list-style-type: none"> If the electric driver is running, input of this signal may stop the electric driver before a clutch signal is seen If the clutch activates, the signal may open Finish output (Open) When the Start signal exists, Stop signal will not be accepted. A minimum interval of 0.5 second is required between the two signals
T8	The interval between the stop signal and start signal should be longer than 0.5 second

Input Signal



Output Signal



Relay of Contact Rating	
Rate Load	AC110V 0.5A , DC24V1A
Max. Allowable Voltage	125VAC, 30VDC
Max. Allowable Current	1A

ASG, Division of Jergens, Inc.