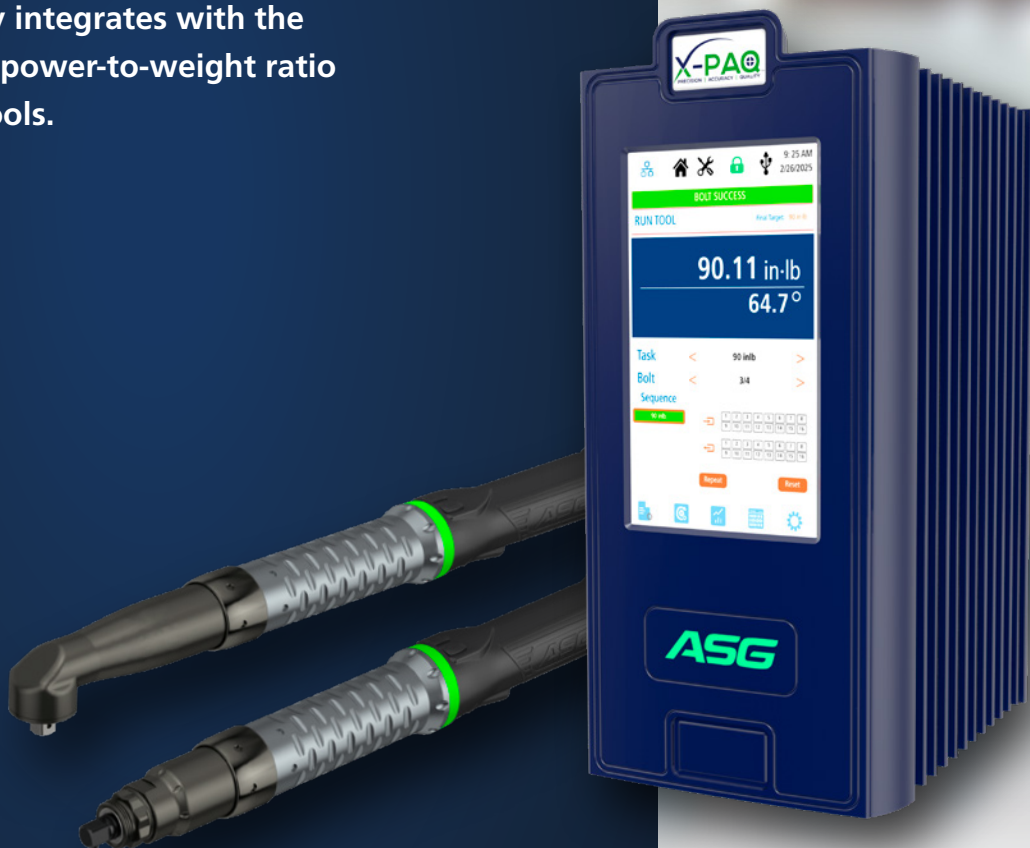




X-PAQ™ II

The X-PAQ II features the CT4500 controller, which seamlessly integrates with the ergonomic, high power-to-weight ratio X-PAQ II series tools.





X-PAQ II

CT4500 CONTROLLER

COMPATIBLE WITH X-PAQ II
SD3500 AND SD4500
ELECTRIC SCREWDRIVERS



The **X-PAQ II CT4500** is designed to elevate quality, efficiency, and accuracy in your threaded fastening applications. Engineered for seamless integration with the ergonomic, high power-to-weight ratio X-PAQ II series tools, it supports a wide range of peripherals for process control, automation, and industrial networking.

Intelligent Features for Maximum Productivity Include:

- **Large, Intuitive Touchscreen:** No external software or licenses required
- **Remote Web Interface:** Access data and settings without walking to the floor
- **Seamless Compatibility:** Familiar interface with the X-PAQ product line for easy adoption
- **Powerful Performance:** Supports torque ranges up to 60 Nm
- **99 Tasks & 99 Global Parameters:** High customization for optimized workflows
- **Multi-Language Support:** Adaptable for global operations
- **16 Programmable Inputs and Output:** Enhanced flexibility for automation and process integration
- **Robust Network Connectivity:** Static or dynamic IP address configurations
- **Innovative Thermal Management:** Advanced design pulls heat away from electronics for reliability and durability
- **Multi-Level Security Access:** Protects settings from unintended changes
- **Customizable Data Views & Analytics:** Real-time statistical insights at your fingertips
- **On-Screen Rundown Graphs:** Review and analyze past rundowns instantly
- **Operator-Centric Design:** Customizable tool LED and button behavior for user preference

The X-PAQ II CT4500 is built for the modern manufacturing environment, offering precision control, real-time data access, and seamless integration in a robust, future-ready package.

REQUEST A QUOTE

ASG-JERGENS.COM/PF | asginfo@asg-jergens.com



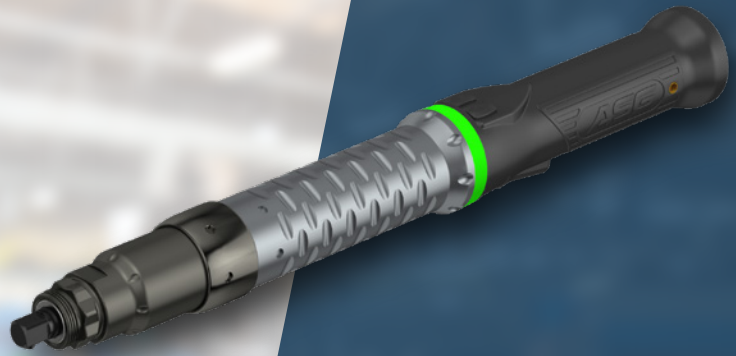


X-PAQ II

SD3500 SERIES

INLINE

2Nm to 20Nm Range



- **Slim, Ergonomic Profile:** Textured grip ensures comfort and control in any position
- **High-Performance Brushless DC Motor:** Runs cooler, lasts longer, and delivers consistent power
- **Precision Torque Transducer + Angle Control:** Ensure exact torque and angle for superior accuracy in critical fastening applications
- **Configurable Operator Buttons:** Selectable functionality for a seamless operation
- **Ultra-Fast Digital Communication:** Instant, reliable data exchange between tool & controller
- **Durable, Low-Failure Cable Design:** Flexible, low-conductor-count connection minimizes wear points
- **Smart On-Board Memory:** Stores tool ID and usage data for traceability and process control
- **Multicolor LED Light Ring:** Customizable status indicators for instant visual feedback and workflow optimization
- **Adaptable Haptic Feedback:** Variable in-handle vibrations provide real-time operator alerts

CONFIGURATIONS:

3/8" Square Pin-Detent Standard
 Ball Detent or Through Pinhole Available Upon Request
 1/4" Hex Quick-Change Available for Certain Models Upon Request

Model Number	Driver Type	Torque Range		Length		Weight		Max RPM	Drive Size
		lb-ft	Nm	in	mm	lb	kg		
ASG-SD3500-20LP	Inline (straight)	2.8 - 14.7	4.0 - 20	14.6	370	2.3	1.0	1100	3/8" Sq.
ASG-SD3500-15LP	Inline (straight)	2.2 - 11.1	3.0 - 15	14.6	370	2.3	1.0	1600	3/8" Sq.
ASG-SD3500-10LP	Inline (straight)	1.4 - 7.4	2.0 - 10	14.6	370	2.3	1.0	2300	3/8" Sq.

REQUEST A QUOTE

ASG-JERGENS.COM/PF | asginfo@asg-jergens.com



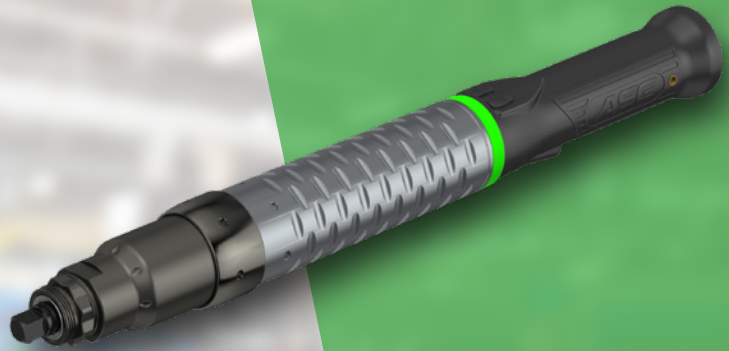


X-PAQ II

SD4500 SERIES

INLINE

4Nm to 40Nm Range



- **Slim, Ergonomic Profile:** Textured grip ensures comfort and control in any position
- **High-Performance Brushless DC Motor:** Runs cooler, lasts longer, and delivers consistent power
- **Precision Torque Transducer + Angle Control:** Ensure exact torque and angle for superior accuracy in critical fastening applications
- **Configurable Operator Buttons:** Selectable functionality for a seamless operation
- **Ultra-Fast Digital Communication:** Instant, reliable data exchange between tool & controller
- **Durable, Low-Failure Cable Design:** Flexible, low-conductor-count connection minimizes wear points
- **Smart On-Board Memory:** Stores tool ID and usage data for traceability and process control
- **Multicolor LED Light Ring:** Customizable status indicators for instant visual feedback and workflow optimization
- **Adaptable Haptic Feedback:** Variable in-handle vibrations provide real-time operator alerts

CONFIGURATIONS: 3/8" Square Pin-Detent Standard
Ball Detent or Through Pinhole Available Upon Request

Model Number	Driver Type	Torque Range		Length		Weight		Max RPM	Drive Size
		lb-ft	Nm	in	mm	lb	kg		
ASG-SD4500-40LP	Inline (straight)	5.9 - 29.5	8.0 - 40	16.0	407	3.7	1.7	1100	3/8" Sq.
ASG-SD4500-30LP	Inline (straight)	4.4 - 22.1	6.0 - 30	16.0	407	3.7	1.7	1600	3/8" Sq.
ASG-SD4500-20LP	Inline (straight)	2.9 - 14.7	4.0 - 20	16.0	407	3.7	1.7	2300	3/8" Sq.

REQUEST A QUOTE

ASG-JERGENS.COM/PF | asginfo@asg-jergens.com



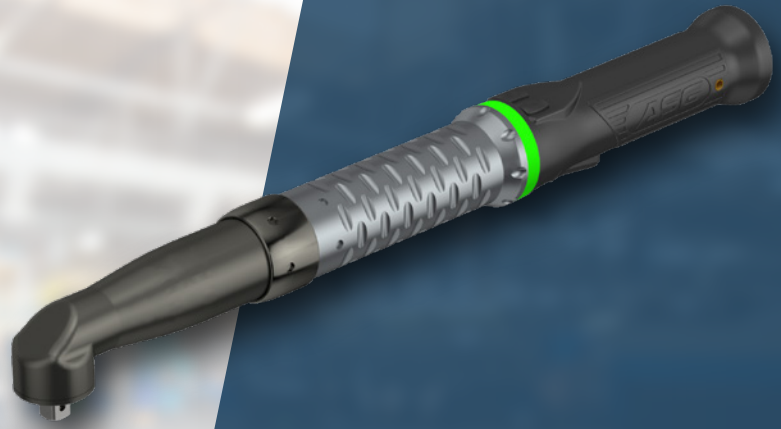


X-PAQ II

SD3500 SERIES

ANGLE

2.8Nm to 34Nm



- **Compact, Optimized Angle Head:** Designed for tight access with durable spiral-cut gears for quieter, longer-lasting performance
- **Slim, Ergonomic Profile:** Textured grip ensures comfort and control in any position
- **High-Performance Brushless DC Motor:** Runs cooler, lasts longer, and delivers consistent power
- **Precision Torque Transducer + Angle Control:** Ensure exact torque and angle for superior accuracy in critical fastening applications
- **Configurable Operator Buttons:** Selectable functionality for a seamless operation
- **Ultra-Fast Digital Communication:** Instant, reliable data exchange between tool & controller
- **Durable, Low-Failure Cable Design:** Flexible, low-conductor-count connection minimizes wear points
- **Smart On-Board Memory:** Stores tool ID and usage data for traceability and process control
- **Multicolor LED Light Ring:** Customizable status indicators for instant visual feedback and workflow optimization
- **Adaptable Haptic Feedback:** Variable in-handle vibrations provide real-time operator alerts

CONFIGURATIONS:

3/8" Square Pin-Detent Standard
 Ball Detent or Through Pinhole Available Upon Request
 1/4" Hex Quick-Change Available for Certain Models Upon Request

Model Number	Driver Type	Torque Range		Length		Weight		Max RPM	Drive Size
		lb-ft	Nm	in	mm	lb	kg		
ASG-SD3500-34RP	Angle (90°)	5.0 - 25.1	6.8 - 34	15.7	400	3.1	1.4	650	3/8" Sq.
ASG-SD3500-25RP	Angle (90°)	3.7 - 18.4	5.0 - 25	16	407	2.9	1.3	800	3/8" Sq.
ASG-SD3500-24RP	Angle (90°)	3.5 - 17.7	4.8 - 24	15.7	400	3.1	1.4	950	3/8" Sq.
ASG-SD3500-20RP	Angle (90°)	2.9 - 14.7	4.0 - 20	16	407	2.9	1.3	1100	3/8" Sq.
ASG-SD3500-16RP	Angle (90°)	2.4 - 11.8	3.2 - 16	15.7	400	3.1	1.4	1350	3/8" Sq.
ASG-SD3500-14RP	Angle (90°)	2.1 - 10.3	2.8 - 14	16	407	2.9	1.3	1600	3/8" Sq.

REQUEST A QUOTE

ASG-JERGENS.COM/PF | asginfo@asg-jergens.com



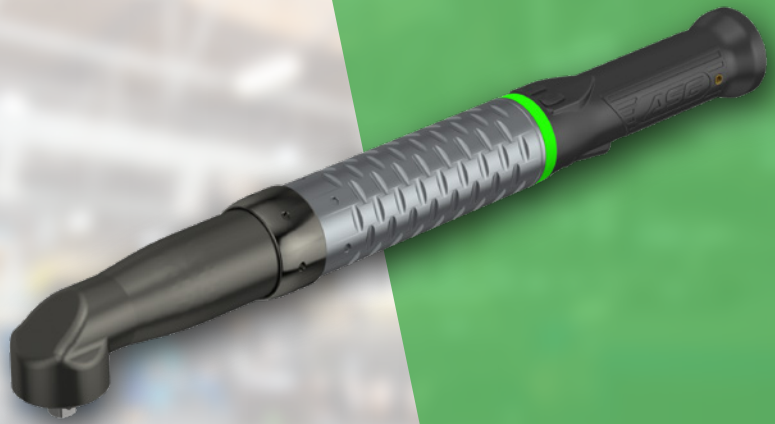


X-PAQ II

SD4500 SERIES

ANGLE

6Nm to 60Nm Range



- **Compact, Optimized Angle Head:** Designed for tight access with durable spiral-cut gears for quieter, longer-lasting performance
- **Slim, Ergonomic Profile:** Textured grip ensures comfort and control in any position
- **High-Performance Brushless DC Motor:** Runs cooler, lasts longer, and delivers consistent power
- **Precision Torque Transducer + Angle Control:** Ensure exact torque and angle for superior accuracy in critical fastening applications
- **Configurable Operator Buttons:** Selectable functionality for a seamless operation
- **Ultra-Fast Digital Communication:** Instant, reliable data exchange between tool & controller
- **Durable, Low-Failure Cable Design:** Flexible, low-conductor-count connection minimizes wear points
- **Smart On-Board Memory:** Stores tool ID and usage data for traceability and process control
- **Multicolor LED Light Ring:** Customizable status indicators for instant visual feedback and workflow optimization
- **Adaptable Haptic Feedback:** Variable in-handle vibrations provide real-time operator alerts

CONFIGURATIONS: 3/8" Square Pin-Detent Standard
Ball Detent or Through Pinhole Available Upon Request

Model Number	Driver Type	Torque Range		Length		Weight		Max RPM	Drive Size
		lb-ft	Nm	in	mm	lb	kg		
ASG-SD4500-60RP	Angle (90°)	8.8 - 44.2	12 - 60.0	17.5	444	4.55	2.1	750	3/8" Sq.
ASG-SD4500-40RP	Angle (90°)	5.9 - 29.5	8.0 - 40	17.5	444	4.55	2.1	1100	3/8" Sq.
ASG-SD4500-30RP	Angle (90°)	4.4 - 22.1	6.0 - 30	17.5	444	4.55	2.1	1600	3/8" Sq.

REQUEST A QUOTE

ASG-JERGENS.COM/PF | asginfo@asg-jergens.com

