

Digital Torque Meter

HP-100 / HP-10

How to Connect to Bluetooth



Outputting Measurement Data

The measured data can be output to a PC, and the data can be collected and accumulated by application. You can also output the collected data to a CSV file. Contact your distributor for application details.

Torque Meter Tool Operating Environment

The system requirements for using the torque meter tool are as follows:

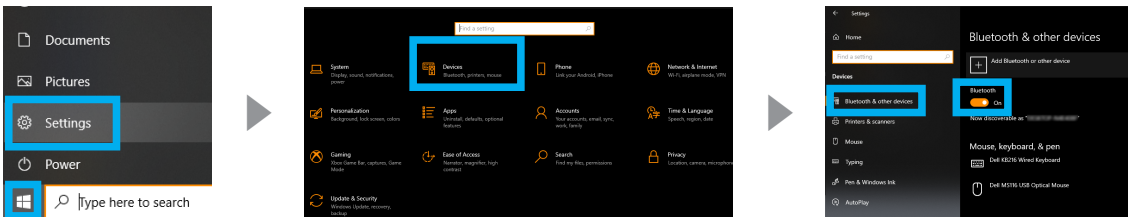
- Windows 10
- Windows 11

Connecting with Bluetooth

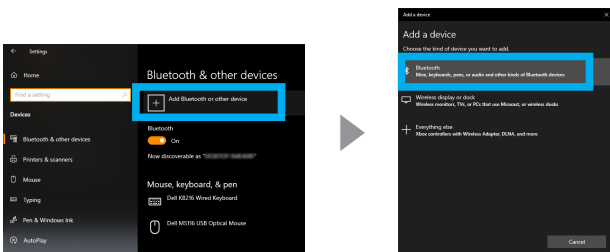
Pair with the tool via Bluetooth® connection.

■ Windows 10

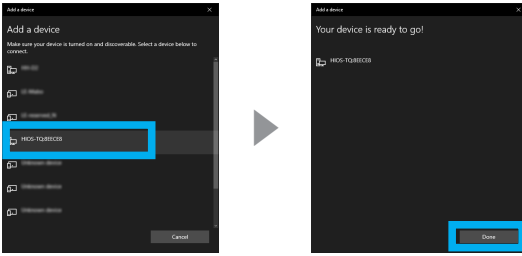
- 1 [Start] ▶ [Setting] ▶ [Devices] ▶ [Bluetooth & other devices] ▶ Turn on [Bluetooth].



- 2 [Add Bluetooth or other device] ▶ Select [Bluetooth] from [Add device].

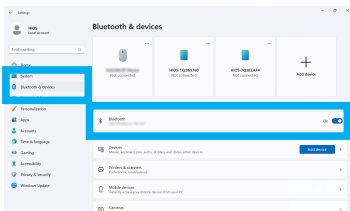


3 Select HIOS-TQ:XXXXXX.

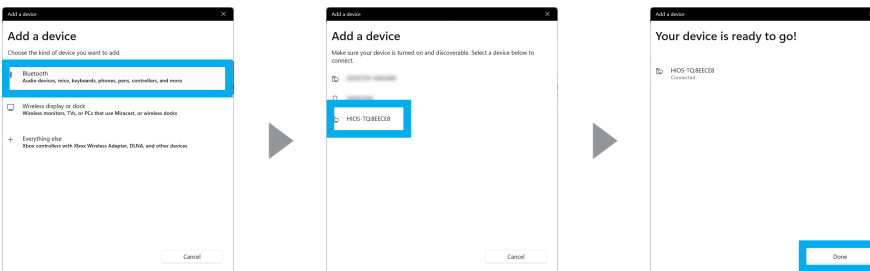


Windows 11

1 [Start] ► [Setting] ► [Bluetooth & devices] ► Turn on [Bluetooth].



2 [Add a device] ► [Bluetooth] ► Select the device ► Click [Finish].



Connecting Using USB or RS-232C (Optional)

Use the supplied USB cable or RS-232C to connect to a PC. RS-232C cable is not provided with the device. Please provide it separately.



Battery charging from PC

- USB charging from a PC may not be able to recover the battery due to low power supply.